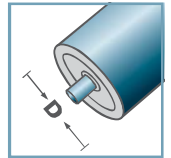


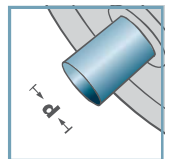
SLR	
Type	Load Rating C [daN]
SLR-480	20
<b>Other dimensions on request!</b>	

Skate Wheel: Steel

**SLR-**



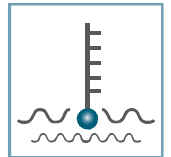
**D** [mm]  
-



**d** [mm]  
6; 8



**C** [daN]  
20



**T** [°C]  
-30° - 140°



-

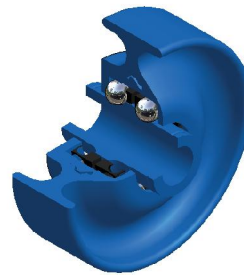
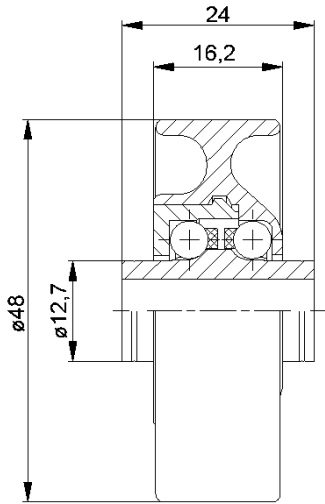


**Carton** [pcs.]

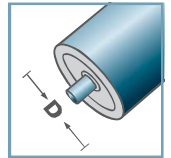
250



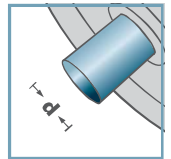
**KLR/SLR/SR**



**KLR-02  
KLR-03**



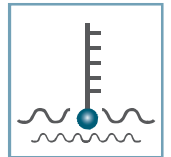
**D** [mm]  
-



**d** [mm]  
6; 8



**C** [daN]  
15



**T** [°C]  
0° - 80°



-



**Carton** [pcs.]

250

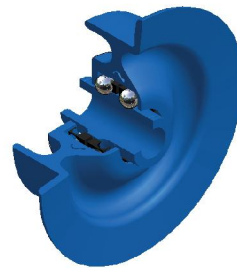
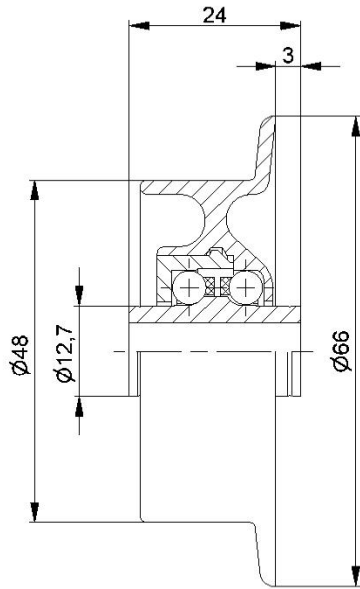
<b>KLR-02/03</b>			
<b>Type</b>	Normal <b>.02</b>	Stainless <b>.03</b>	Load Rating <b>C [daN]</b>
KLR-480	x	x	15

**Other dimensions on request!**

- ☛ Housing: Plastic
- ☛ Inner Race: Plastic
- ☛ Bearing Cap: Plastic
- ☛ Ball Cage: Plastic
- ☛ Ball
  - ☛ 02: Steel
  - ☛ 03: 1.4034



**KLR/SLR/SR**



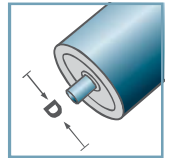
SR-02/03			
Type	Normal	Stainless	Load Rating C [daN]
SR-480	x	x	10

**Other dimensions on request!**

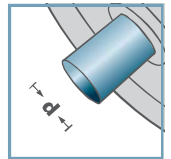
- ☛ Housing: Plastic
- ☛ Inner Race: Plastic
- ☛ Bearing Cap: Plastic
- ☛ Ball Cage: Plastic
- ☛ Ball
  - ☛ 02: Steel
  - ☛ 03: 1.4034



**SR-02  
SR-03**



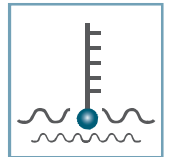
**D** [mm]  
-



**d** [mm]  
6; 8



**C** [daN]  
15



**T** [°C]  
0° - 80°



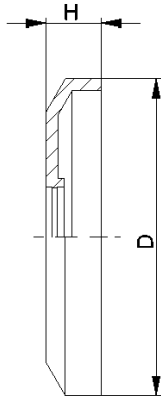
-



**Carton** [pcs.]

250

**KLR/SLR/SR**



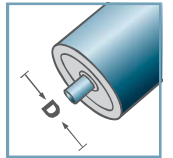
DK-KLR		
Type	D	H
DK-KLR-02	40,5	7

**Other dimensions on request!**

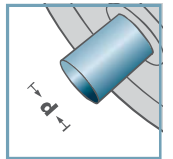
Seal Bonnet: Plastic



**DK-KLR-02**



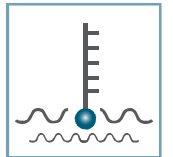
**D** [mm]  
-



**d** [mm]  
-



**C** [daN]  
-



**T** [°C]  
0° - 80°



-



**Carton** [pcs.]



**KLR/SLR/SR**